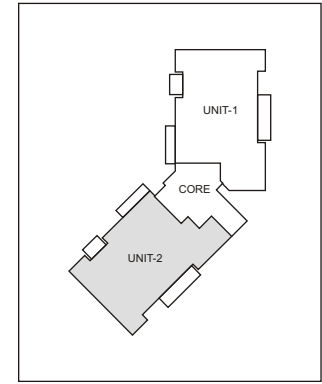


Experion Windchants Gurgaon Floor Plan, 5BHK 6325

Wandering Buds Unit Plan

Typical Lower Level Plan - Unit 2 (5 BHK)

(WB1, WB7 & WB8) Sale Area: 6325 (sq. ft.)



	MM	Feet-Inch
Master Bedroom	3660 x 4890	12'-0" x 16'-1"
Bedroom	3770 x 3965	12'-5" x 13'-0"
Kitchen	3650 x 4270	12'-0" x 14'-0"
Family Room / Dining	6375 x 4875	20'-11" x 16'-0"
Living	6090 x 4775	20'-0" x 15'-8"
Puja	1515 x 1035	5'-0" x 3'-6"

	MM	Feet-Inch
Balcony-1	6320 x 1800	20'-9" x 6'-0"
Balcony-2	2815 x 1800	9'-3" x 5'-11"
Utility Balcony	5240 x 1345	17'-2" x 4'-5"
Utility	2070 x 2050	6'-9" x 6'-8"
Master Toilet	2485 x 3890	8'-2" x 12'-9"
Toilet-1	2745 x 2245	9'-0" x 7'-4"

	MM	Feet-Inch
Toilet-2	1220 x 2050	4'-0" x 6'-9"
PDR	1375 x 1990	4'-6" x 6'-6"
Master Dress	2485 x 1920	8'-2" x 6'-4"
Lift	1645 x 1615	5'-5" x 5'-4"

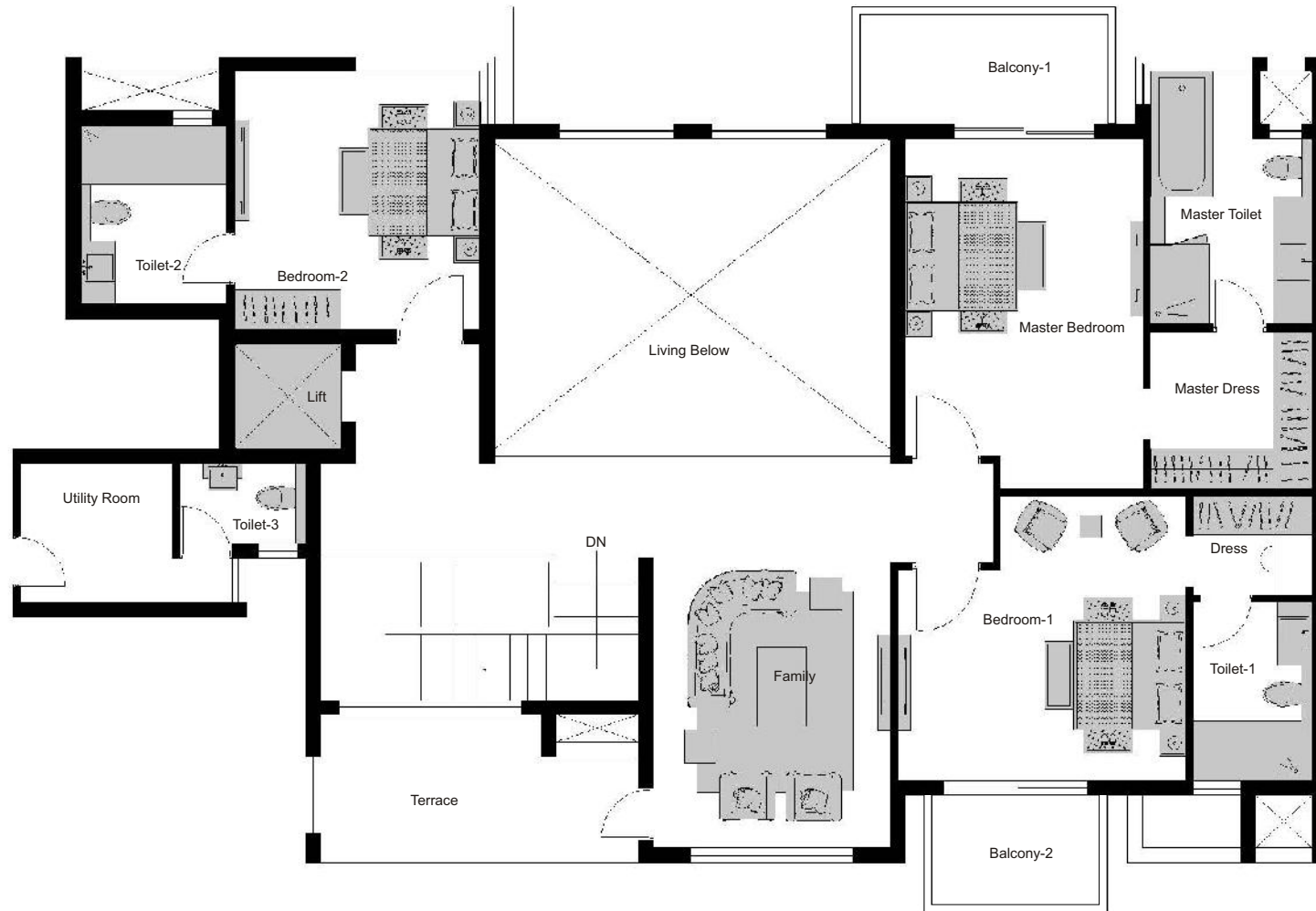
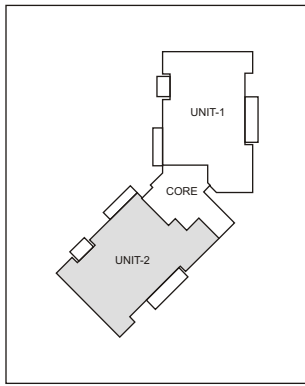
Disclaimer :

1. The furniture and its arrangement is indicative and not included in the apartment. 1sqm = 10.764 sft
2. All plans, specifications, artistic renderings and images as shown in this page are only indicative and are subject to change as may be decided by the company or directed by any competent authority in the best interests of the development. Soft furnishing, furniture and gadgets do not form a part of the offering.

Wandering Buds Unit Plan

Typical Upper Level Plan - Unit 2 (5 BHK)

(WB1, WB7 & WB8)



	MM	Feet-Inch
Master Bedroom	3660 x 4890	12'-0" x 16'-1"
Bedroom-1	4430 x 4380	14'-6" x 14'-4"
Bedroom-2	3770 x 3965	12'-4" x 13'-0"
Family	3650 x 4385	12'-0" x 14'-5"
Balcony-1	4050 x 1800	13'-4" x 6'-0"

	MM	Feet-Inch
Balcony-2	2815 x 1800	9'-3" x 6'-0"
Terrace	4895 x 2280	16'-1" x 7'-6"
Utility Room	2330 x 2135	7'-8" x 7'-0"
Master Toilet	2485 x 3890	8'-2" x 12'-9"
Toilet-1	1830 x 2745	6'-0" x 9'-0"

	MM	Feet-Inch
Toilet-2	2745 x 2245	9'-0" x 7'-4"
Toilet-3	1225 x 1930	4'-0" x 6'-4"
Master Dress	2485 x 2415	8'-2" x 7'-11"
Dress	1830 x 1520	6'-0" x 5'-0"
Lift	1645 x 1615	5'-5" x 5'-4"

Disclaimer :

1. The furniture and its arrangement is indicative and not included in the apartment. 1sqm = 10.764 sft
2. All plans, specifications, artistic renderings and images as shown in this page are only indicative and are subject to change as may be decided by the company or directed by any competent authority in the best interests of the development. Soft furnishing, furniture and gadgets do not form a part of the offering.